



Dukes Avenue, Epping, CM16

BUTLER & STAG



Situated in the heart of Theydon Bois is this stunning spacious three bedroom/two bathroom semi detached bungalow.



Freehold

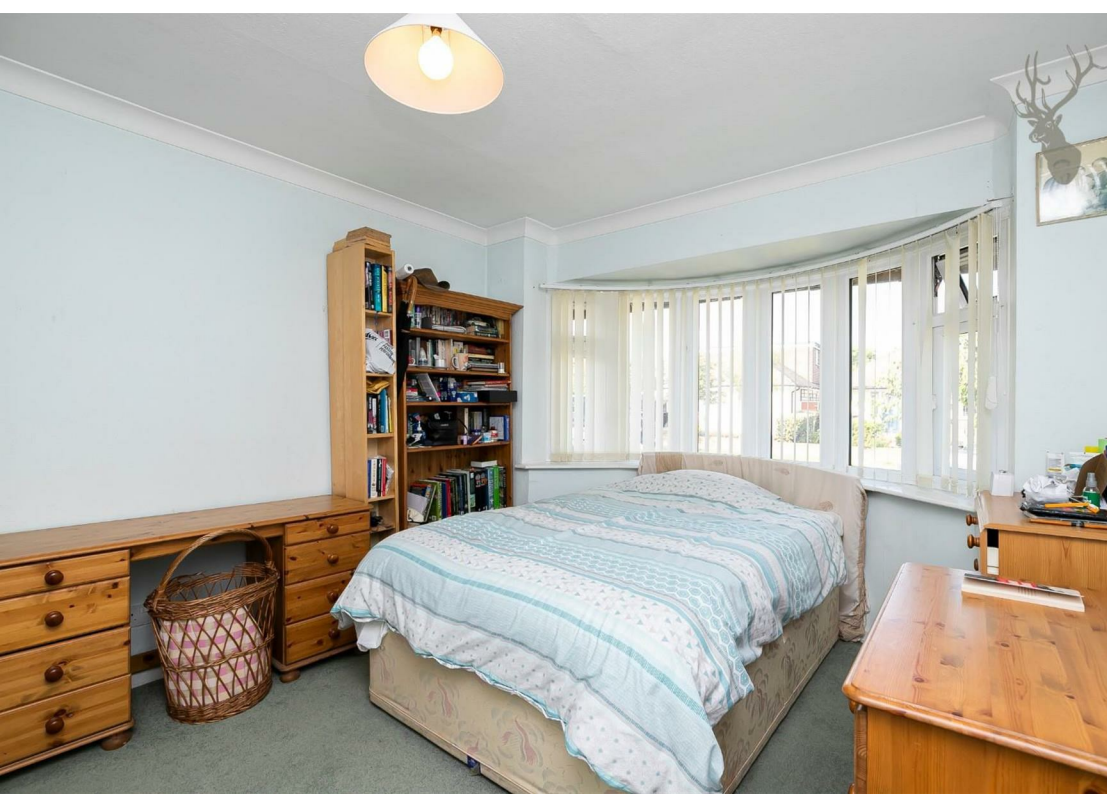
- Semi-Detached Family Bungalow
- Three Bedrooms/Two Bathrooms
- Spacious Living/Dining Area
- Off Street Parking/Garage
- Separate Kitchen
- Potential To Extend (stp)

The property offers an abundance of living space spanning just over 1300 sq ft. Accommodation consists of a large formal living room, a separate kitchen, three bedrooms and two bathrooms.

Externally, the property boasts off street parking via the driveway, side access and a mature south facing garden, with a separate detached garage.

Dukes Avenue is a much sought after turning in the ever popular village of Theydon Bois. The village is arranged around the green and offers a parade of shops, pubs and restaurants and offers easy access into Epping Forest, with its deer sanctuary. Transport links into London are excellent. Theydon Bois underground station is in walking distance and there are several well regarded state and private schools within easy reach. Local leisure facilities include golf courses, sports centres and a tennis club.

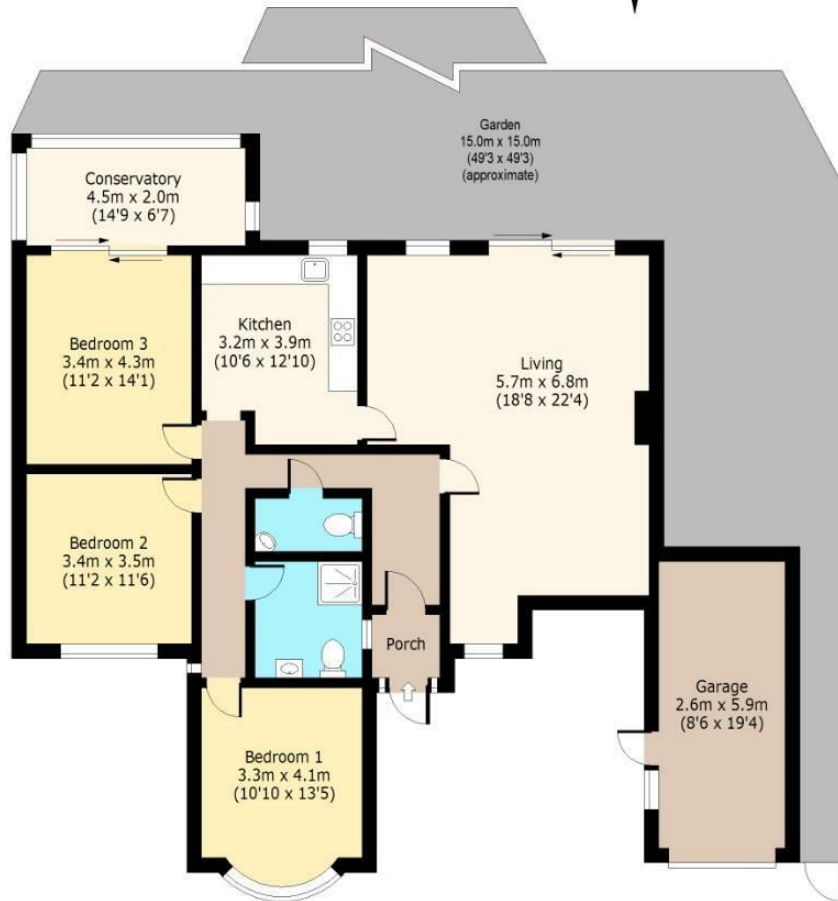




Dukes Avenue

Ground Floor

Approx. 125 Sq. meters (1345 Sq. feet)



Total area: approx. 125 Sq. meters (1345 Sq. feet) (Excluding Garage)

Total area: approx. 140 Sq. meters (1506 Sq. feet) (Including Garage)

For illustration purposes only - not to scale

www.lpaplus.com

IMPORTANT NOTICE - These particulars have been prepared in good faith and they are not intended to constitute part of an offer or contract. We have not performed a structural survey on this property and the services, appliances and specific fittings have not been tested. All photographs, measurements, floor plans and distances referred to are given as a guide and should not be relied upon.

BUTLER & STAG

☎ 01992 667666

🏠 4 Forest Drive, Theydon Bois, Essex, CM16 7EY

✉ theydon@butlerandstag.com

www.butlerandstag.uk